

PAIR 13 JANSSEN/VAN LOON

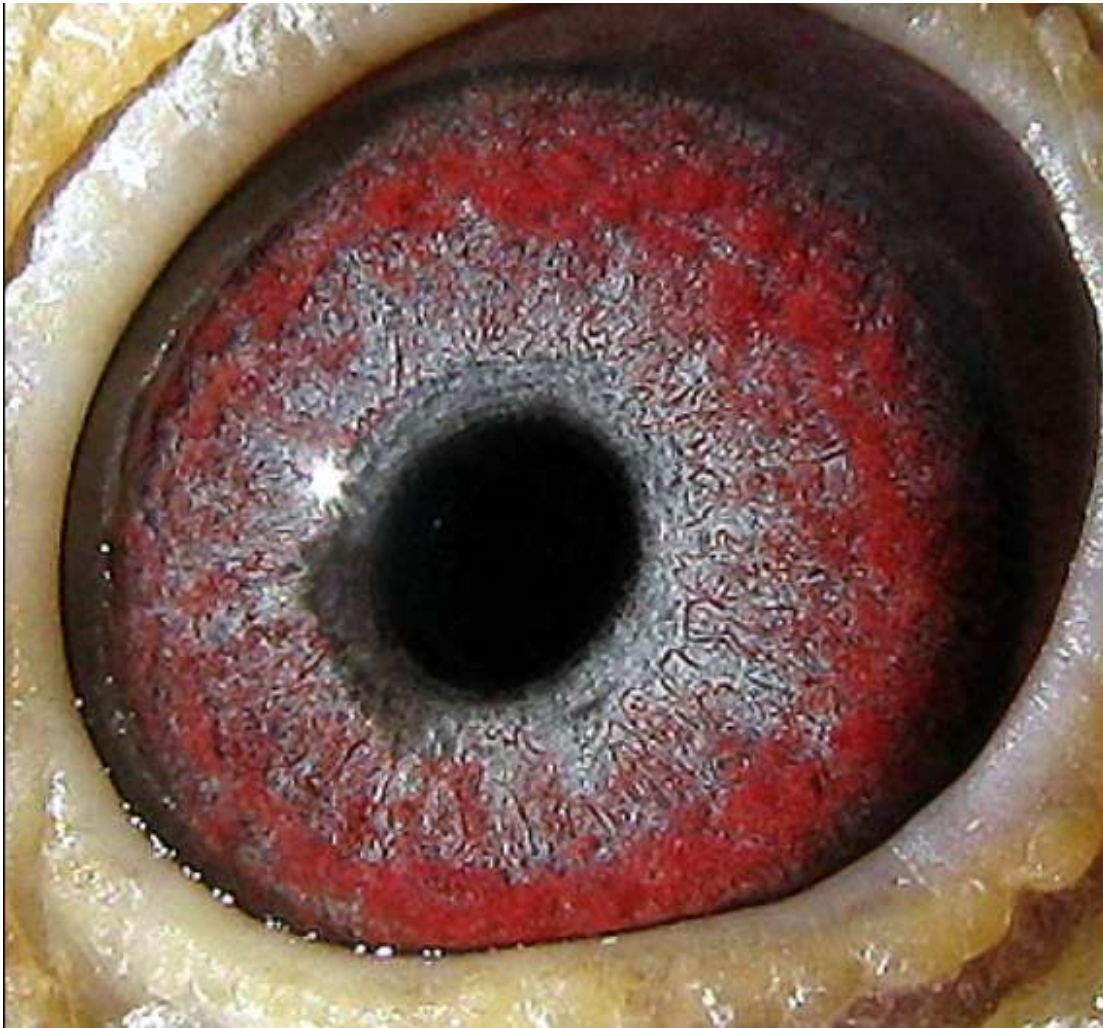
JONGE PET X 1090'S PIED

SA 08 27455 BBC-JONGE PET. DIRECT SON OF THE PET HEN 1ST SAHPA GLENDAMBO SPECIAL WHEN MATED TO JONGE GOLDEN G/SIRE OF 1ST SAHPA LYNDHURST YBC 2010 FOR G HAMILTON. CONTAINS ALL OF GREG'S JANSSEN TOP LINERS. FIRST PROGENY ARE BEING RACED THIS YR.

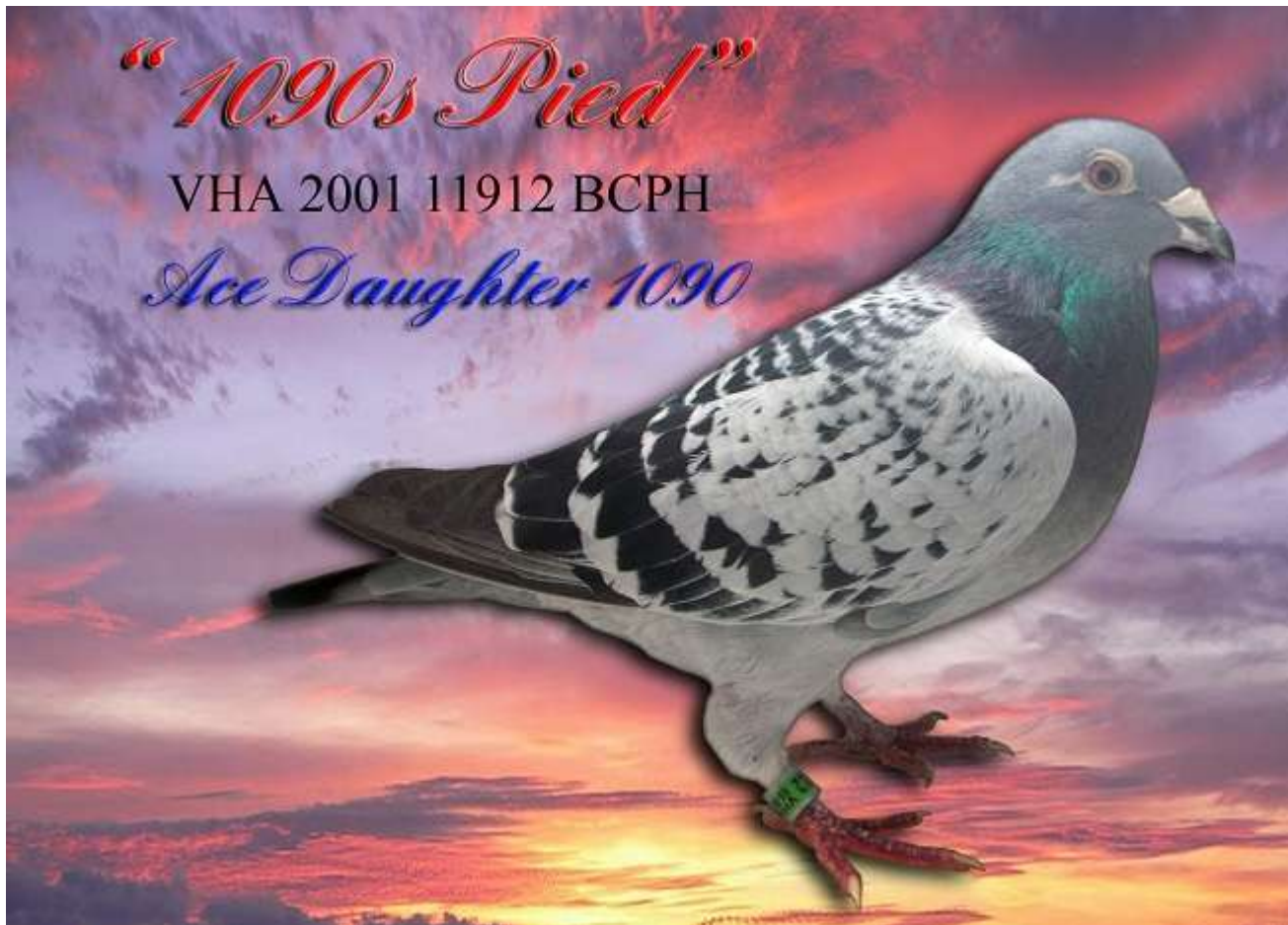


AS A YOUNGSTER WHEN PURCHASED FROM GREG HAMILTON

BBC 27455



VHA 01 11912 BCPH-1090'S PIED. JANSSEN DIRECT PRODUCING DAUGHTER OF THE FAMOUS SLATE COCK 1090 (11 X 1ST AUCKLAND COMBINE) PURCHASED BY DR C WALKER. 1090'S PIED IS DAM OF 2ND FED 370 KM, 5TH FED 515 KM, 7TH FED 160 KM, 8TH FED 420 KM, 9TH FED 'TASSIE' 410 KM, 16TH FED 733 KM. AN OUTSTANDING BREEDER.



SA-08-27455 - BLUE BAR COCK -

<p>SA-08-34625 "Jonge Golden" BC COCK Janssen. Half brother to 1st National all Melbourne Feds Langwell 640km. First year at stock is the sire of 1st club Carriston 250km. 4th club Marla 950km 2008.</p>	<p>VHA-01-26792 BB Janssen. Very best of Wout Smeulders lines. Full brother to 1st 1000km only bird home on the day.</p>	<p>CU-94-1697 BB "Golden" Direct son of "Golden Couple" Super breeding cock whose progeny are brooding winners all around the country from</p>	<p>NL-82-8250012 BB "De012"</p> <p>NL-85-8550578 BB "De 578"</p>
<p>AUST-06-3957 "Pat Hen" BCP HLN Ace racer and breeder. 1st SAHPA Glendambo 490km Special against 951b. 15th SAHPA Lyndhurst YBC 500km against 4,117b. 31st The Twins 605 km. Sires Produce Classic. Dam of 4th SAHPA Glendambo YBC 4,071b. 4th & 8th SAHPA Glendambo Open 3 869b. 23rd & 33rd SAHPA The Twins 600km 3,599b. Brod from the great lines of "Super 531" and the "Generaal"</p>	<p>SA-97-45925 BC Top producing hen. Dam of many good birds including 1st National (Melbourne Feds) Langwell 640kms.</p> <p>SA-90-16480 RC Top stock cock for Stan Ferguson. Sire of 1st club Farina 510km, 5th SAHPA Farina. 3rd club Farina. 19th SAHPA Farina etc.</p> <p>SA-95-15134 BC Janssen - Van Loon. Top Producer hen. Dam of 5 x 1st, 3 x 2nd, 1 x 3rd plus 5th, 8th, 14th, 18th, 23rd & 27th SAHPA.</p>	<p>CU-94-1671 BCP "Miss Saigon" Top breeding hen, dam of 2nd, 3rd & 5th Fed VHA from very limited opportunity as her youngsters are highly</p>	<p>NL-04-213359 SLATE "Showgun"</p> <p>CJ-82-1660 BC "Red Wine"</p> <p>SA-89-48635 BB</p> <p>SA-89-48532 RC</p> <p>SA 94-17074 BB</p> <p>BALCOM-90-0196 BC</p>
	<p>VHA-99-39758 BCP Janssen. Sire of 1st SAHPA Glendambo 10 bird special 991b 2008, 15th SAHPA Lyndhurst YBC 500km 4,117b 2007, 31st SAHPA SRC Sires Produce 605km 2007. Inbred to Wout Smeulders "Super 531" winner of 15x1st and 101 prizes, being responsible for world famous "Jemex Band", "Wonderboy 05 and 06" etc.</p> <p>AUST-01-7930 BBP "Ultra Violet" Janssen. Dam of 1st SAHPA Glendambo 10 bird special 490km 991b 2008, 15th SAHPA Lyndhurst YBC 500km 4,117b 2007, 17th SAHPA Lyndhurst YBC 3 591b 2008. Line bred to "The Generaal" winner of 87 prizes including 4x1st for Wout Smeulders and a superstar breeder for Hans Eijerkamp & Sons of</p>	<p>VHA-97-19638 BB "Witoger" Both the sire and dam of this cock are from Wout Smeulders "Champion 02" winner of 5x1st - 83 prizes and 33 times in top</p> <p>CU-91-36819 BC "Julianna" Direct daughter of "Champion 02". Daughter of Julianna has bred 7 winners in USA. This hen is one of the best bred</p> <p>AUST-99-10317 BB "The Colonel" Double g-son of "The General". Full brother to the g-dam of the year 2003 & 2001 Kemps Creek Hanson Car</p> <p>GB-98-57906 BB "Blue Velvet" DeKlar. G-daughter of "The General"</p>	<p>CU-91-1402 BBP "The Thriller"</p> <p>CU-91-36819 BC "Julianna"</p> <p>NL-83-8366802 RC "Champion 02"</p> <p>NL-83-884090 BC "Countess"</p> <p>NL-81-1558400 BB "The Commissioner"</p> <p>NL-81-1558513 BB "Duchess"</p> <p>NL-93-8334286 BB "Jonge Generaal"</p> <p>NL-87-2556070 BB</p>



VHA 01 11912
PIGEON SALES AUSTRALIA

PO BOX 174 Smithfield Plains SA 5114

Tel: 0400 400 324

URL: www.pigeonsales.com.au * eMail: pigeonsalesaustralia@hotmail.com

BAND/RING: VHA 01 11912

STRAIN: JANSSEN

COLOR: BLUE CHEQ PIED

NAME/ALIAS: 1090'S PIED

SEX: Hen

D.O.B: 29/01/2001

EYE INFO: (0)

"1090s Pied" Top producing Daughter of the famous 1090. 11912 is the dam of 2nd Fed 370 km, 5th GMPF 515 km, 7th GMPF 160 km, 8th GMPF 420 km, 9th Fed "Tassie" 410 km, 16th Fed 733 km.

SIRE

MKU 94 1090

Strain: JANSSEN
 Color: BLUE SLATE
 The Famous 1090 imported by Dr Colin Walker from D McNeill Auckland NZ where he was the most outstanding bird to ever race in the Auckland Combine gaining 9 x 1st Fed, 2 x 2nd Fed, 1 x 3rd Fed, 1 x 5th Fed, 2 x 7th Fed, 1 x 8th Fed, 1 x 10th Fed. He is responsible for hundreds of Fed Positions across Victoria including 45 in 4 yrs Bernie Willensens GMPF. An outstanding Janssen cock.

AUST 92 4787

Strain: JANSSEN
 Color: BLUE SLATE
 Sire of the famous 1090. From the famous Ponderosa Australia Pair 11 The Producer x Telstra

CENCO 92 5530

Strain: JANSSEN
 Color: BLUE BAR
 Janssen. Dam of the famous 1090.

SA 91 22899

Strain: JANSSEN
 Color: BLUE SLATE

The Producer. Top Producing Grandson of James Bond. Grand sire of the famous 1090 the 11 x 1st Auckland Combine cock, owned

SA 91 55076

Strain: JANSSEN
 Color: BLUE SLATE
 Telstra. Top producing Janssen Ponderosa Pair 11 Hen. G/Dam of the famous 1090 the 11 x 1st Auckland Combine winner cock

NL 91 1559862

NL 91 1559804

NL 91 1559766

NL 91 1559841

DAM

RRPF 98 2538

Strain: JANSSEN
 Color: BLUE SLATE
 Janssen, bred from original Ponderosa James Bond Janssen lines from the Major Rob Wilson. Dam of 1st & 2nd club 279 km, 1st club 20th Fed 505 km

NL 91 1559817

Strain: JANSSEN
 Color: BLUE CHEQ
 The Pukkel Cock. James Bond X 05 Bloodlines

NL 91 1559807

Strain: JANSSEN
 Color: BLUE BAR
 Original Ponderosa Holland Import. James Bond lines.

NL 87 1459912

Strain: JANSSEN
 Color: BLUE BAR

1/2 Brother to the Pukkel Cock. Grandson of Famous 05

NL 89 2563099

Strain: JANSSEN
 Color: BLUE BAR
 Daughter of James Bond.

NL 81 197972

NL 85 679142

NL 83 1774007

NL 88 1235906